





Hyeonkyeong You

b. 1985, Cheongju (KR)

Lives and Works in Berlin (DE)

Hyeonkyeong You (b. 1985 in Cheongju, KR) lives and works in Berlin (DE). She received her Bachelor of Fine Arts from Seoul National University and completed her Master's degree at the same institution.

She has been selected for overseas residencies at Schloss Plüschow in Plüschow (2011), Rote Fabrik in Zürich (2014), and Doosan Residency in New York (2016). In her artistic practice, she explores the relationship between the artist and the object, oscillating between abstraction and figuration. Although her fast and dynamic brushstrokes can be interpreted in an expressionist context, her bold use of blank space and gestural abstraction is reminiscent of oriental painting.

You's recent solo exhibitions include:

The One in Difficulty, 2GIL29 GALLERY, Seoul (KR); *Painting, as Another Method for a Meeting*, Hori Artspace, Seoul (KR); *Attractiveness*, JN Gallery, Seoul (KR); *Your transparent and resonant soul*, Gallery Mark, Seoul (KR); *Nobody Hurt by Painting*, itta Space, Incheon (KR); *It Was Beautiful Days*, Gallery Now, Seoul (KR); *Be Happy*, GALLERY2, Seoul (KR) and *New Days*, Spacemom museum of art, Cheongju (KR).

Your work can be found in various public and private collections such as OCI Museum of Art, Seoul (KR); Mimesis Art Museum, Paju (KR); and Chongkundang Holdings Corp, Seoul (KR).

Every Bride is Pretty #2, 2023
Oil on canvas
200 × 168 cm | 80¾ × 66⅞ in



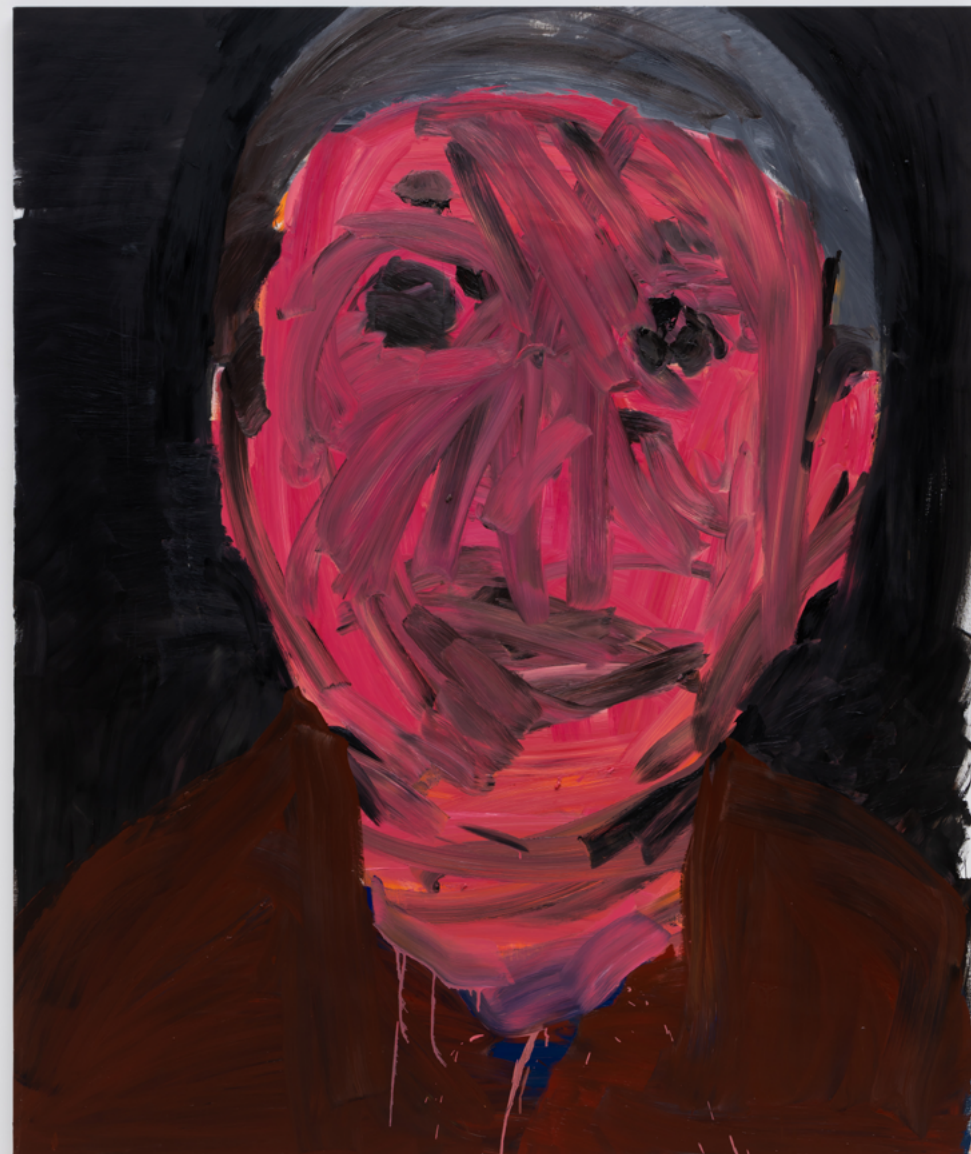




On the Road #20, 2023
Oil on canvas
160 × 129 cm | 60 × 50 3/4 in

Enseoul is pleased to present *Every Bride is Pretty*, a solo exhibition with works by South Korean artist Hyeonkyeong You (b. 1985 in Cheongju, KR). This exhibition is the artist's first solo presentation with the gallery.

The exhibition *Every Bride is Pretty* unveils You's distinctive approach to painting and perception, encompassing figures, objects, and landscapes. Her artworks defy easy categorisation such as portrait or still life, featuring expressive brushwork and abstract forms, even when depicting figurative subjects. Executed with minimal strokes, the paintings purposefully omit certain external features, fostering the illusion of swift execution while, in truth, demanding substantial amount of time and thorough observation. This intentional omission imbues the works with a sense of emptiness, yet the heavy colours and tones, rugged brushwork, and bold compositions maintain a tension between the artist and the objects.



The One in Difficulty #2, 2023
Oil on canvas
200 × 168 cm | 78¾ × 66⅞ in



Details / *The One in Difficulty #2*, 2023



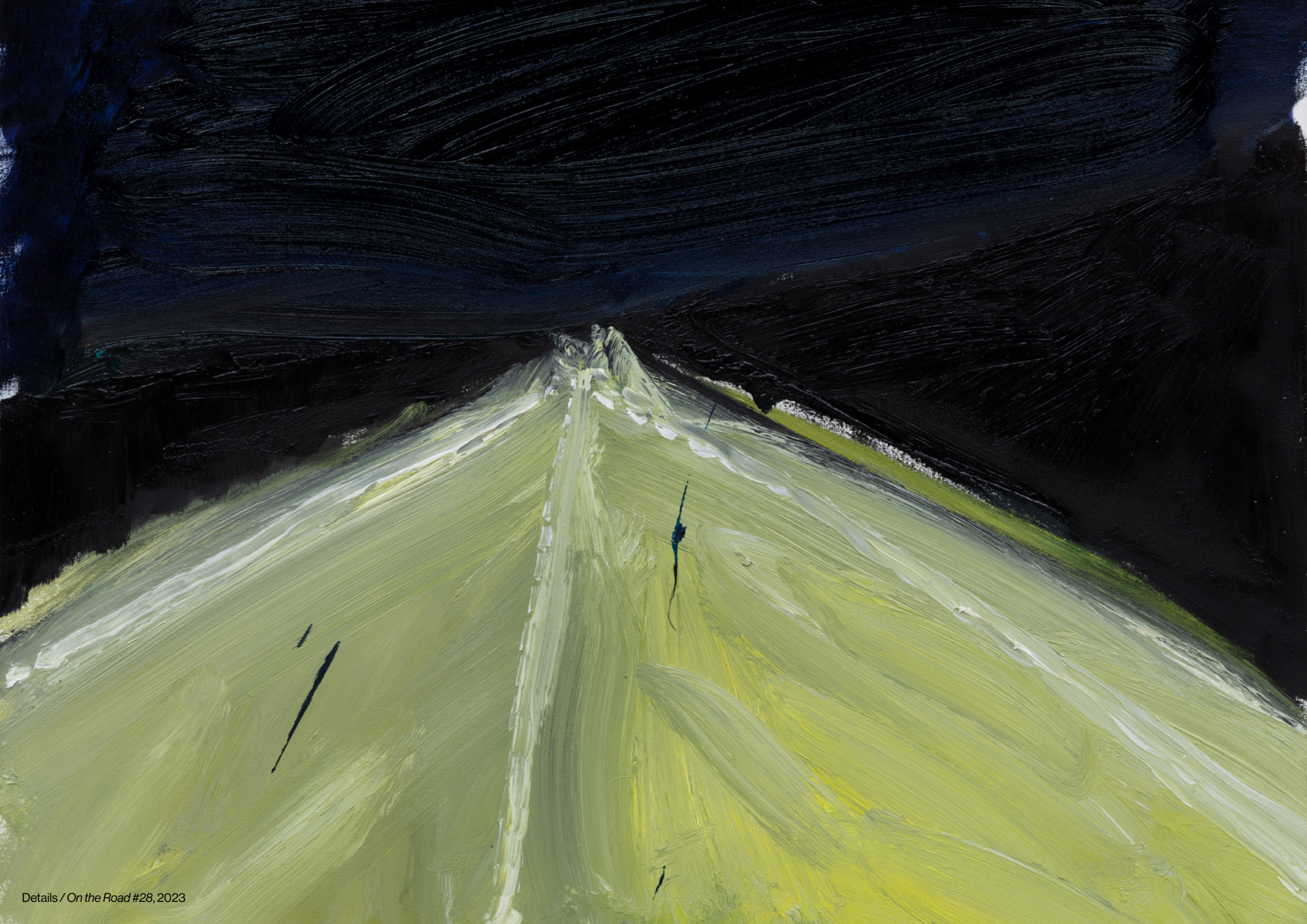
Bright Night, Czech Republic, 2023
Oil on canvas
91 × 73 cm | 35 7/8 × 28 3/4 in



The works brought together in this exhibition do not merely portray the exteriors of objects; instead, they invite viewers to contemplate their essence and project themselves within. Anyone can empathise with the figures presented in You's paintings, whether it be the one in difficulty or the pretty bride. When confronted with You's portrayal of "roads," one can envision any path within their own mind. This approach places You's works on the ambiguous border between completion and incompleteness, while allowing for deeper understanding of the objects. She believes that refraining from making subjective judgments based on appearance of an object encourages to better comprehend and to express its essence.



On the Road #28, 2023
Oil on canvas
51 × 63 cm | 20¹/₈ × 24³/₄ in







On the Road #16, 2023
Oil on canvas
38 × 38 cm | 15 × 15 in





On the Road #13, 2023
Oil on canvas
45.4 × 45.4 cm | 17 7/8 × 17 7/8 in





Crossing the Bridge on a Foggy Bright Night, 2022
Oil on canvas
144 × 111 cm | 56¾ × 43¾ in



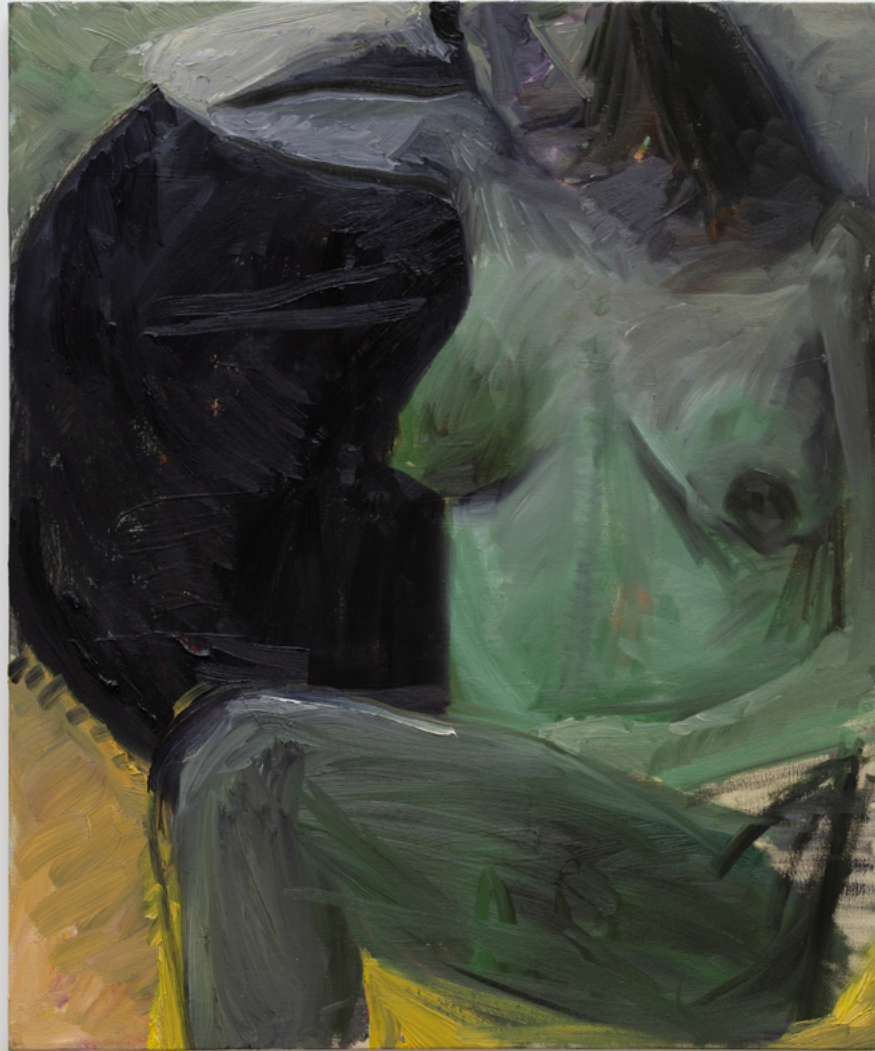
In this sense, *Every Bride is Pretty* epitomises her ethos, prioritising dynamic and expressionistic gestures over conventional expression of bride's beauty, challenging viewers to transcend mere appearances and pursue something inherent. You's empathetic portrayal in *The One in Difficulty #2* also inspire audience to empathise with anxiety, failure, and frustration that the person in difficulty, must endure. The one chose to forge own path with dignity regardless of difficulties, rather than conforming to societal norms or becoming dependent on groups for comfort.



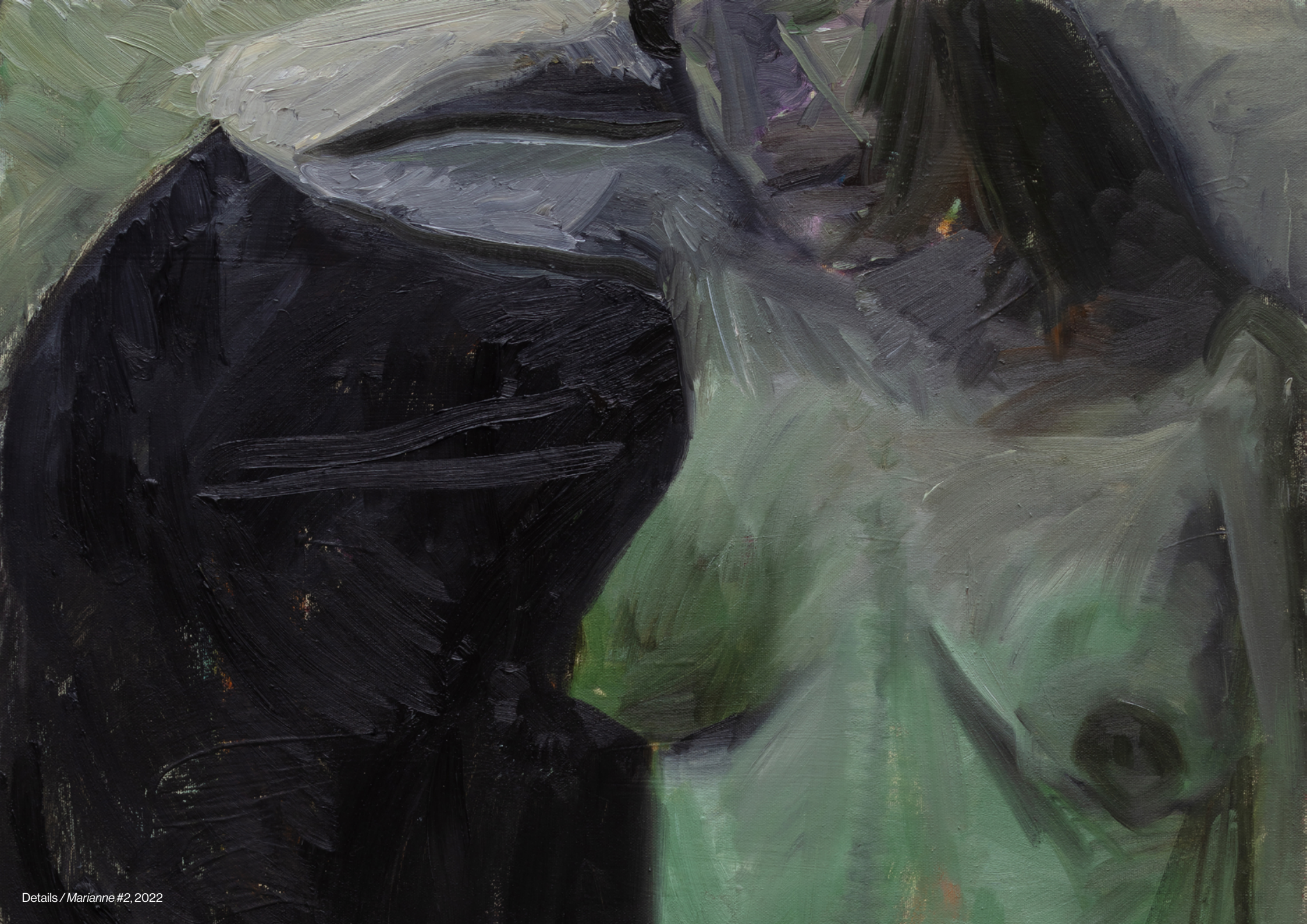
September in Seorak, 2022
Oil on canvas
140 × 115 cm | 55½ × 45¼ in



In Marianne's Home #1, 2022
Oil on canvas
65 × 51 cm | 22 $\frac{5}{8}$ × 20 $\frac{1}{8}$ in



Marianne #2, 2022
Oil on canvas
73 × 61 cm | 28 3/8 × 24 in

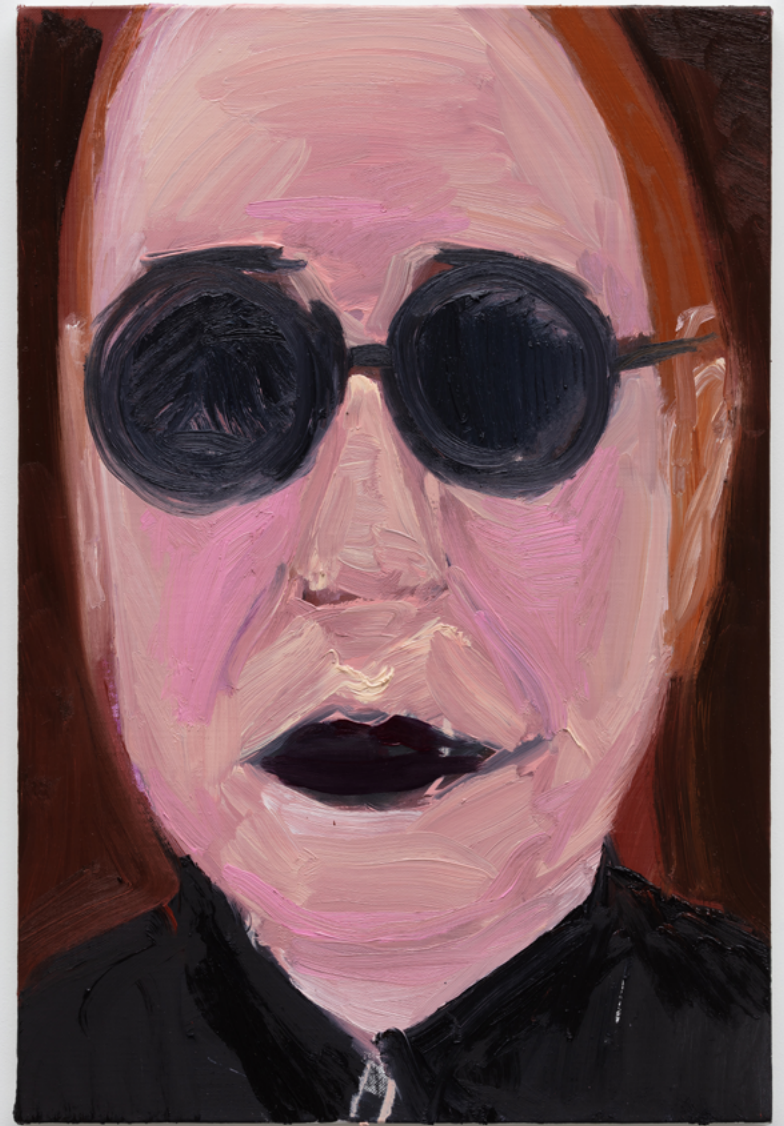


Details / Marianne #2, 2022



In Marianne's Home, 2022
Oil on canvas
65 × 50 cm | 25⁵/₈ × 19³/₄ in

You meticulously ponders the conclusion of each piece, seeking a delicate equilibrium between restraint and immoderation before putting her brush down. Across all of the paintings in *Every Bride is Pretty, You* implies her prolonged anticipation for the moment of completion, culminating in the collapse of boundaries between the object and the artist herself.



Tonia R. Alvarez #2, 2022
Oil on canvas
144 × 111 cm | 56¾ × 43¾ in



Hyeonkyeong You

b. 1985, Cheongju (KR)
Lives and Works in Berlin (DE)

Education

2011 MFA, Seoul National University graduate school, painting (completion)
2009 BFA, Seoul National University, painting

Residency Programme

2018 Makeshop art space, Paju/KR
2016 Doosan residency, New York/USA
2014 Rote Fabrik, Zürich/CH
2011 Schloss Plüschow, Plüschow/DE

Awards

2019 The 8th Chongkundang Yesulisang
2008 Ha dong chul Scholarship

Solo Exhibition

| | | | |
|------|---|--|----------------|
| 2024 | Every Bride is Pretty | ENSEOUL | NL |
| 2023 | ZERO TO ONE – YOU Hyeonkyeong You Hyeonkyeong Solo Exhibition | JN Gallery 2GIL29 Gallery | KR KR |
| 2022 | AISA NOW Paris 2022 Hyeonkyeong You Painting, as Another Method for a Meeting Attractiveness | 2GIL29 Gallery Hori Artspace JN Gallery | FR KR KR |
| 2021 | Your Transparent and Resonant Soul I Can Go Where I Want to Go Nobody Hurt by Paintin | Gallery Mark Gallery Yangsan Itta Space | KR KR KR |
| 2020 | Things That the Painter Can Not See It Was Beautiful Days | Superior Gallery Gallery Now | KR KR |
| 2019 | Asia Now Paris 2019 Be Happy | | FR KR |
| 2018 | My Pain Gives You A Warm New Days | Gallery2 Gallery Sein Spacemom museum of art | KR KR KR |
| 2017 | No Place To Go 2 | Woosuk Gallery, Seoul National University | KR |
| 2016 | No Place To Go | Doosan Gallery | USA |
| 2012 | Lying | Hakgojae Gallery | KR |
| 2011 | It's My Faul | OCI Museum of Art | KR |
| 2010 | I Don't Know Well | Gallery LVS | KR |
| 2009 | Painter and Model *Hadongchul Scholarship exhibition Sonata of Desire *SeMA Seoul Museum of Art supporting program | Woosuk Gallery, Seoul National University Insa Art Center | KR KR |

Group Exhibition

| | | | |
|------|---|---|----------------------------|
| 2023 | Salon de Nook Gallery Double-Ended Face | Nook Gallery Nook Gallery Kyobo Artspace | KR KR KR |
| 2022 | The Birth of Art Aligning the Stars | Hangaram Art Museum Art Chosun Space | KR KR |
| 2021 | The 8th Chongkundang Yesulisang In Search of Lost Time Winter, Summer Body Language People who don't Talk are Dangerous | Sejong Museum of Art Cian Museum Artspace 3 Saga Artspace Hue | KR KR KR KR KR |
| 2020 | AP(Artist Project) 4: MINGLE | Mimesis Art Museum | KR |

[Re] Collect: Collection of Female Artists

Human Chung
Study for a Portrait
Cedric Lollia / You Hyeonkyeong
Slide Speedily but Lightly
Time of Painting
Korean Modern and Contemporary Drawings
Figure/Landscape
Portrait of a lady
Face to Face
Face, hide

From the Face
h/er
PROLOGUE 2017
Painterly, unpainterly
Cold Fact
Six Senses
Spectators
A Panorama of Figures
New Visions New Voices 2013

2012 Woman+Body
2011 A Brushstroke
2010 Hue & Deep
Wild thinking
Intuition
Ilhyun Travel Grant Recipients
Seogyo-Sixty 2010: The Imaginary Archive-gaze of 120
2009 Eastern Evils
Ilhyun Travel Grant, Student artist supporting program
[!] Exclamation
Eastern Evils Region rounding exhibition
Principle of Having Affairs Run by a Select Few
2008 Excellent Graduation Exhibition
Slipped Colors

Seoul National University Museum of Art
Mun Kye Museum
Artspace Connection
Gallery Artvera's
Dongsomun
Sejong Center
Seoul Olympic Museum of Art
AMC lab
Opera Gallery
Soda Museum
Seongnam Arts Center Cube
Museum Bandal Gallery
Weekend
Ligak Museum of Art
Makeshop Art Space
Gallery Kiche
Chosun University Museum of Art
OCI Museum of Art
Doosan Gallery
Jeonbuk Museum of Art
National Museum of Modern and Contemporary Art
Kepco Artcenter Gallery
Hakgojae Gallery
Woosuk Hall, Seoul National University
Artzio Gallery
Hakgojae Gallery
Ilhyun Museum
Gallery Sangsangmadang
Doosan Gallery
Ilhyun Museum
Kaywon School of Art &
Design Gallery 27
Gallery Young
Dongduk Art Gallery
Shinhan Gallery



General
Press

hello@enseoul.com
press@enseoul.com

Sales
Phone & Whatsapp

gwen.park@enseoul.com
+31612278062

De Clercqstraat 17, 1053 AA, Amsterdam
Wed - Sun 11am - 6pm

ENSEOUL